

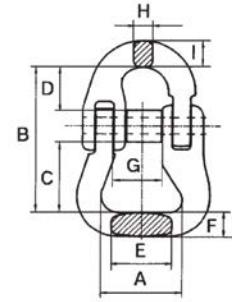
# CARTEC 80

## CLS

### WEBBING COUPLING LINK



Chain	Code	A	B	C	D	E	F	G	H	I	Weight	W.L.L.	
mm inch		mm	mm	mm	mm	mm	mm	mm	mm	mm	Kg	Kg	
7-8	9/32-5/16	CLS 08	40	58	24	20	24	14	17	9	10	0,28	2000
10	3/8	CLS 10	40	81	35	30	30	14	23	11	13	0,47	3150
13	1/2	CLS 13	55	104	48	36	36	18	28	16	16	0,99	5300
16	5/8	CLS 16	67	115	57	40	44	24	36	21	21	2	8000
20	3/4	CLS 20	82	134	65	50	52	29	40	23	23	2,3	12500
22	7/8	CLS 22	125	177	100	59	68	39	43	27	27	6,3	15000

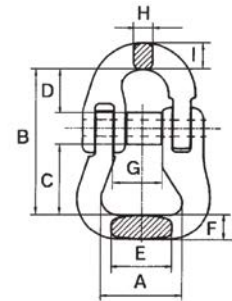


## CLS

### SAGOLA PER NASTRI



Catena	Code	A	B	C	D	E	F	G	H	I	Peso	W.L.L.	
mm inch		mm	mm	mm	mm	mm	mm	mm	mm	mm	Kg	Kg	
7-8	9/32-5/16	CLS 08	40	58	24	20	24	14	17	9	10	0,28	2000
10	3/8	CLS 10	40	81	35	30	30	14	23	11	13	0,47	3150
13	1/2	CLS 13	55	104	48	36	36	18	28	16	16	0,99	5300
16	5/8	CLS 16	67	115	57	40	44	24	36	21	21	2	8000
20	3/4	CLS 20	82	134	65	50	52	29	40	23	23	2,3	12500
22	7/8	CLS 22	125	177	100	59	68	39	43	27	27	6,3	15000

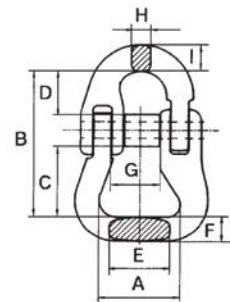


## CLS

### MAILLE D'ACCOUPEMENT POUR SANGLE



Chaîne	Code	A	B	C	D	E	F	G	H	I	Poids	C.M.U.	
mm inch		mm	mm	mm	mm	mm	mm	mm	mm	mm	Kg	Kg	
7-8	9/32-5/16	CLS 08	40	58	24	20	24	14	17	9	10	0,28	2000
10	3/8	CLS 10	40	81	35	30	30	14	23	11	13	0,47	3150
13	1/2	CLS 13	55	104	48	36	36	18	28	16	16	0,99	5300
16	5/8	CLS 16	67	115	57	40	44	24	36	21	21	2	8000
20	3/4	CLS 20	82	134	65	50	52	29	40	23	23	2,3	12500
22	7/8	CLS 22	125	177	100	59	68	39	43	27	27	6,3	15000

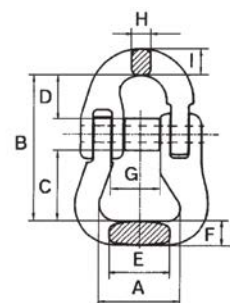


## CLS

### RUNDSCHLINGEN-KUPPLUNG FÜR BÄNDER



Kette	Code	A	B	C	D	E	F	G	H	I	Gewicht	W.L.L.	
mm inch		mm	mm	mm	mm	mm	mm	mm	mm	mm	Kg	Kg	
7-8	9/32-5/16	CLS 08	40	58	24	20	24	14	17	9	10	0,28	2000
10	3/8	CLS 10	40	81	35	30	30	14	23	11	13	0,47	3150
13	1/2	CLS 13	55	104	48	36	36	18	28	16	16	0,99	5300
16	5/8	CLS 16	67	115	57	40	44	24	36	21	21	2	8000
20	3/4	CLS 20	82	134	65	50	52	29	40	23	23	2,3	12500
22	7/8	CLS 22	125	177	100	59	68	39	43	27	27	6,3	15000



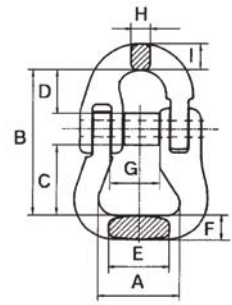
# CARTEC 80

## CLS

### PASADERA PARA BANDAS



Cadena		Código	A	B	C	D	E	F	G	H	I	Peso	W.L.L.
mm	inch		mm	mm	mm	mm	mm	mm	mm	mm	mm	Kg	Kg
7-8	9/32-5/16	CLS 08	40	58	24	20	24	14	17	9	10	0,28	2000
10	3/8	CLS 10	40	81	35	30	30	14	23	11	13	0,47	3150
13	1/2	CLS 13	55	104	48	36	36	18	28	16	16	0,99	5300
16	5/8	CLS 16	67	115	57	40	44	24	36	21	21	2	8000
20	3/4	CLS 20	82	134	65	50	52	29	40	23	23	2,3	12500
22	7/8	CLS 22	125	177	100	59	68	39	43	27	27	6,3	15000



## CLS

### ELO DE LIGAÇÃO PARA CINTA



Cadeia		Código	A	B	C	D	E	F	G	H	I	Peso	W.L.L.
mm	inch		mm	mm	mm	mm	mm	mm	mm	mm	mm	Kg	Kg
7-8	9/32-5/16	CLS 08	40	58	24	20	24	14	17	9	10	0,28	2000
10	3/8	CLS 10	40	81	35	30	30	14	23	11	13	0,47	3150
13	1/2	CLS 13	55	104	48	36	36	18	28	16	16	0,99	5300
16	5/8	CLS 16	67	115	57	40	44	24	36	21	21	2	8000
20	3/4	CLS 20	82	134	65	50	52	29	40	23	23	2,3	12500
22	7/8	CLS 22	125	177	100	59	68	39	43	27	27	6,3	15000

